

RXP[®]-X[®] RS 300

Race-ready performance watercraft, reimagined.

KEY FEATURES

- Rotax 1630 ACE - 300 engine
- Ergolock™ R racing seat
- T3-R hull
- **NEW Tech Package:** BRP Audio - premium system & full-color 7.8" wide display (Optional)
- Launch control
- Low-rise racing handlebar
- Double-angled footwell wedges
- X-sponsons



- NEW *Premium* Triple Black
- Millennium Yellow

CAPACITY

| | |
|--------------------------|---------|
| Rider Capacity | 2 |
| Weight Capacity | 182 kg |
| Fuel Capacity | 70 L |
| Glove Box | 9.7 L |
| Front Bin | 143 L |
| Storage Capacity - Total | 153.7 L |

DIMENSIONS

| | |
|---------------------------|----------|
| Length (bumper to bumper) | 331.8 cm |
| Width | 125 cm |
| Height | 111 cm |

HULL

| | |
|----------|------------|
| Type | T3-R Hull™ |
| Material | Fiberglass |

OTHER FEATURES

- iBR - Intelligent Brake & Reverse
- Extended VTS™ (Variable Trim System)
- RF D.E.S.S.™ key**
- Watertight phone compartment
- LinQ™ attachment system
- Wide-angle mirrors
- Round handle grips
- Footwell carpets
- Large swim platform with carpet
- Ski tow eye

ROTAX[®] ENGINE

1630 ACE™ - 300

| | |
|-----------------|---|
| Intake System | Supercharged with external intercooler |
| Displacement | 1,630 cc |
| Cooling | Closed-Loop Cooling System (CLCS) |
| Reverse System | Electronic iBR** |
| Fuel Type | Minimum 95 Octane Recommended: 98 Octane |
| Throttle System | iTC™ (Intelligent Throttle Control) |
| Exhaust System | D-Sea-Bel™ system |

GAUGE

| | |
|-------------------|---|
| Type of Gauge | Large panoramic 7.8" wide LCD display optional (w/audio) 7.6" wide digital display (w/o audio) |
| Main Functions | <ul style="list-style-type: none"> • BRP Connect (opt.)** • Music (opt.)** • Weather (opt.)** • Bluetooth connectivity (opt.) • Speedometer • RPM • Clock • VTS™ • Fuel consumption (opt.) • Fuel autonomy • Speed statistics • Vehicle hours |
| iTC System - Mode | <ul style="list-style-type: none"> • Sport mode • ECO[®] mode • Slow mode • Speed regulator • Launch control |

WEIGHT

| | |
|------------|--------|
| Dry Weight | 354 kg |
|------------|--------|

WARRANTY

BRP limited warranty covers the watercraft for two years.

*Electronic brake, neutral and reverse.

**May not be available at the time of purchase. Please check with your dealer.

RXP[®]-X[®] RS 300



● Millennium Yellow

FEATURE HIGHLIGHTS



ERGOLOCK™ R System

A narrow seat profile with deep knee pockets and a revolutionary adjustable saddle that allows riders to lock in to the machine like never before.



BRP Audio - Premium System (Optional)

The industry's first manufacturer-installed truly waterproof Bluetooth[®] audio system.²



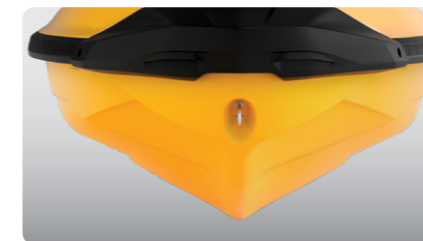
Full-Color 7.8" Wide Display (Optional)

Full-color display with incredible visibility and a new level of functionality. Bluetooth and smartphone app integration provides music, weather, navigation and more.



ROTAX[®] 1630 ACE™ - 300 Engine

The Rotax 1630 ACE is the most powerful Rotax engine ever, delivering high efficiency and best-in-class acceleration.



T3-R Hull™

A deep-V design that offers unrivaled handling and acceleration and a new level of control at high speed.



Large Front Storage

An impressive 143 L of sealed storage space allows riders to safely stow belongings while riding.